



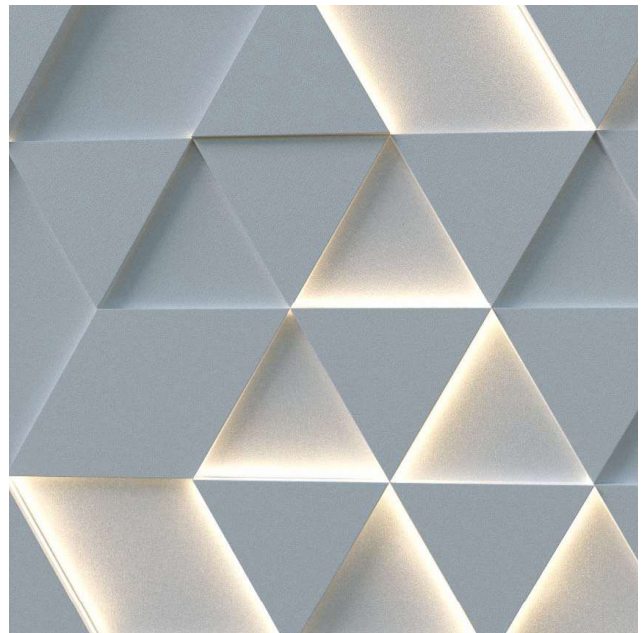
NEWS ANNOUNCEMENT:

2018/2019

CERCHIO LIGHTING  
INTRODUCES...

# DEKO MATERIAL WITH INTEGRATED LED

DEKO IS AN INEXPENSIVE, LIGHTWEIGHT MATERIAL THAT OFFERS  
ENDLESS SHAPES AND DESIGNS FOR SEAMLESS INTEGRATION OF  
LIGHTING INTO CEILINGS AND WALLS.





## NEWS ANNOUNCEMENT:

2018/2019

CERCHIO LIGHTING  
INTRODUCES...

# DEKO MATERIAL WITH INTEGRATED LED



THE ABOVE TWO IMAGES ARE A CEILING MOUNTED DESIGN WHICH IS FULLY INTEGRATED INTO THE PLASTER CEILING. THIS EXTRUDED SHAPE RUNS 22 FEET EMITTING AN EVEN DOWNLIGHT OF DIFFUSED LEDS FROM INSIDE THE EXTRUSION THROUGHOUT THE ENTIRE LENGTH OF THE FIXTURE.

THIS SOLUTION IS LIGHTER WEIGHT THAN ALUMINUM OR PLASTER AND MORE THAN 50% LESS EXPENSIVE.

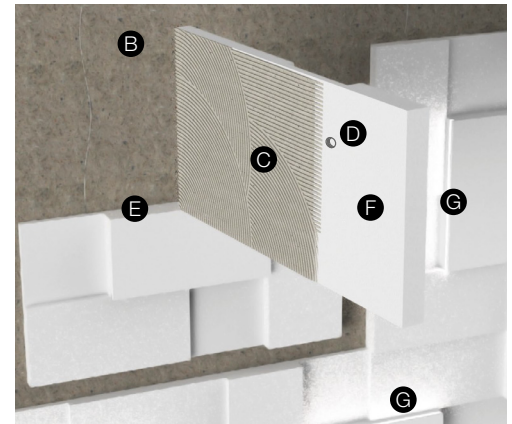


NEWS ANNOUNCEMENT:

2018/2019

CERCHIO LIGHTING  
INTRODUCES...

# DEKO MATERIAL WITH INTEGRATED LED



THE DEKO MATERIAL CAN BE BOTH PLASTERED AND PAINTED OVER FOR SEAMLESS INTEGRATION INTO WALLS AND CEILINGS. THE INSTALLATION IS VERY EASY DUE TO IT'S LIGHTWEIGHT PROPERTIES ALSO RESULTING IN LOW LABOR COST.